



# MONTHLY MEMBERSHIP PROGRESS REPORT

District 24 E

Results as of: 04/30/2018

GMT: CINDY GREGG

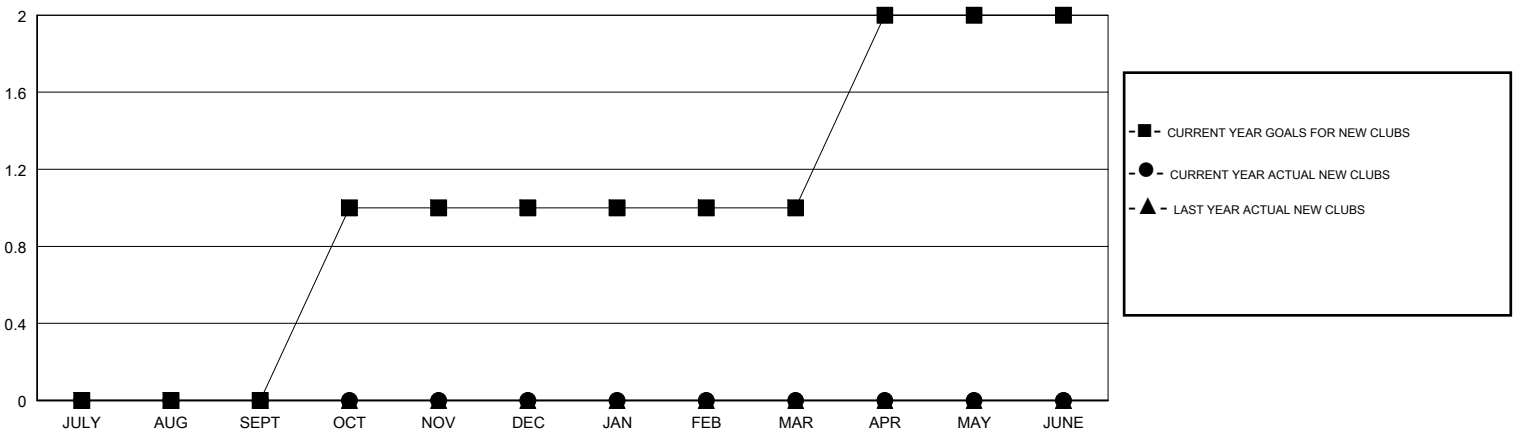
LOCATION VIRGINIA

GMT CA

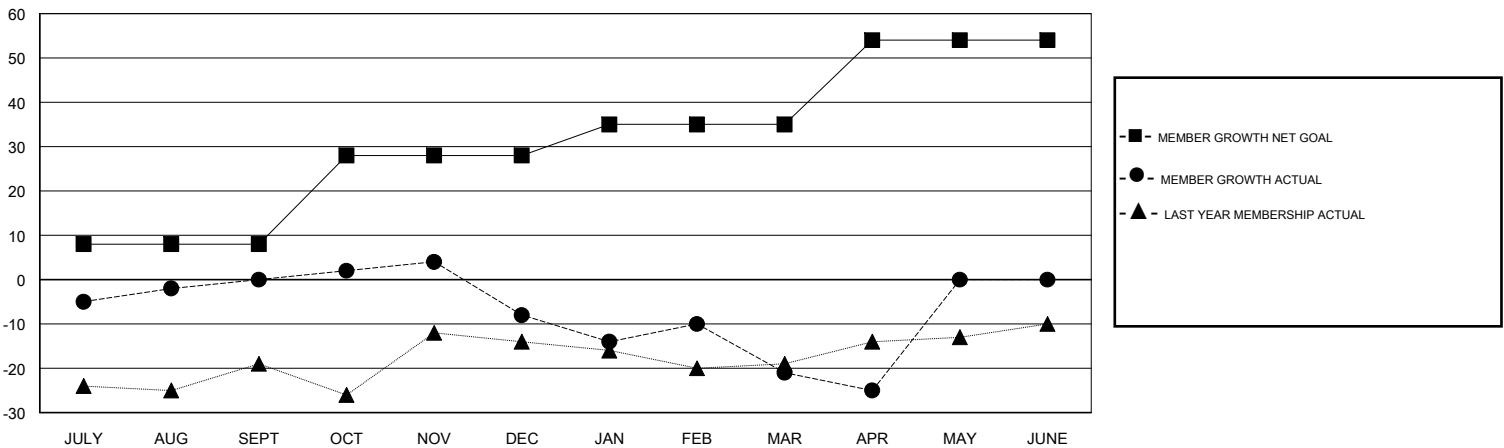
Clubs			
RESULTS FOR 2017-2018			
QUARTER	NEW CLUB GOAL	NEW CLUBS	DROPPED CLUBS
JULY/AUG/SEPT	0	0	0
OCT/NOV/DEC	1	0	0
JAN/FEB/MAR	0	0	0
APR/MAY/JUNE	1	0	0

Members			
RESULTS FOR 2017-2018			
QUARTER	MEMBER GROWTH NET GOAL	MEMBER GROWTH ACTUAL	DROPPED MEMBERS ACTUAL (including transfers)
JULY/AUG/SEPT	8	25	25
OCT/NOV/DEC	20	34	40
JAN/FEB/MAR	7	20	32
APR/MAY/JUNE	19	4	6

GOALS AND ACTUAL NEW CLUBS CUMULATIVE



GOALS AND ACTUAL MEMBERS CUMULATIVE



DROPPED CLUBS: 0
------------------

19 CLUBS OF 34 ADDED 1 OR MORE NEW MEMBERS

GENDER DISTRIBUTION	
MALE	621 (71.54%)
FEMALE	247 (28.46%)
Women Percentage Fiscal Year Goal: 30%	

DROPPED MEMBERS	
DECEASED	14
CLUB CANCELLED	0
OTHER	89
<b>TOTAL</b>	<b>103</b>

[CLICK HERE FOR CUMULATIVE MEMBERSHIP DATA](#)

TOTAL FAMILY UNIT MEMBERS	149
FAMILY MEMBERS PAYING HALF DUES	75